

AFRICA CENTRE OF EXCELLENCE IN AGRICULTURE: *World Bank Project*

1

**FEDERAL UNIVERSITY OF AGRICULTURE, ABEOKUTA
(FUNAAB)**
OLUKAYODE D. AKINYEMI

PROJECT DESCRIPTION

2

PROJECT:

World Bank Africa Centre of Excellence

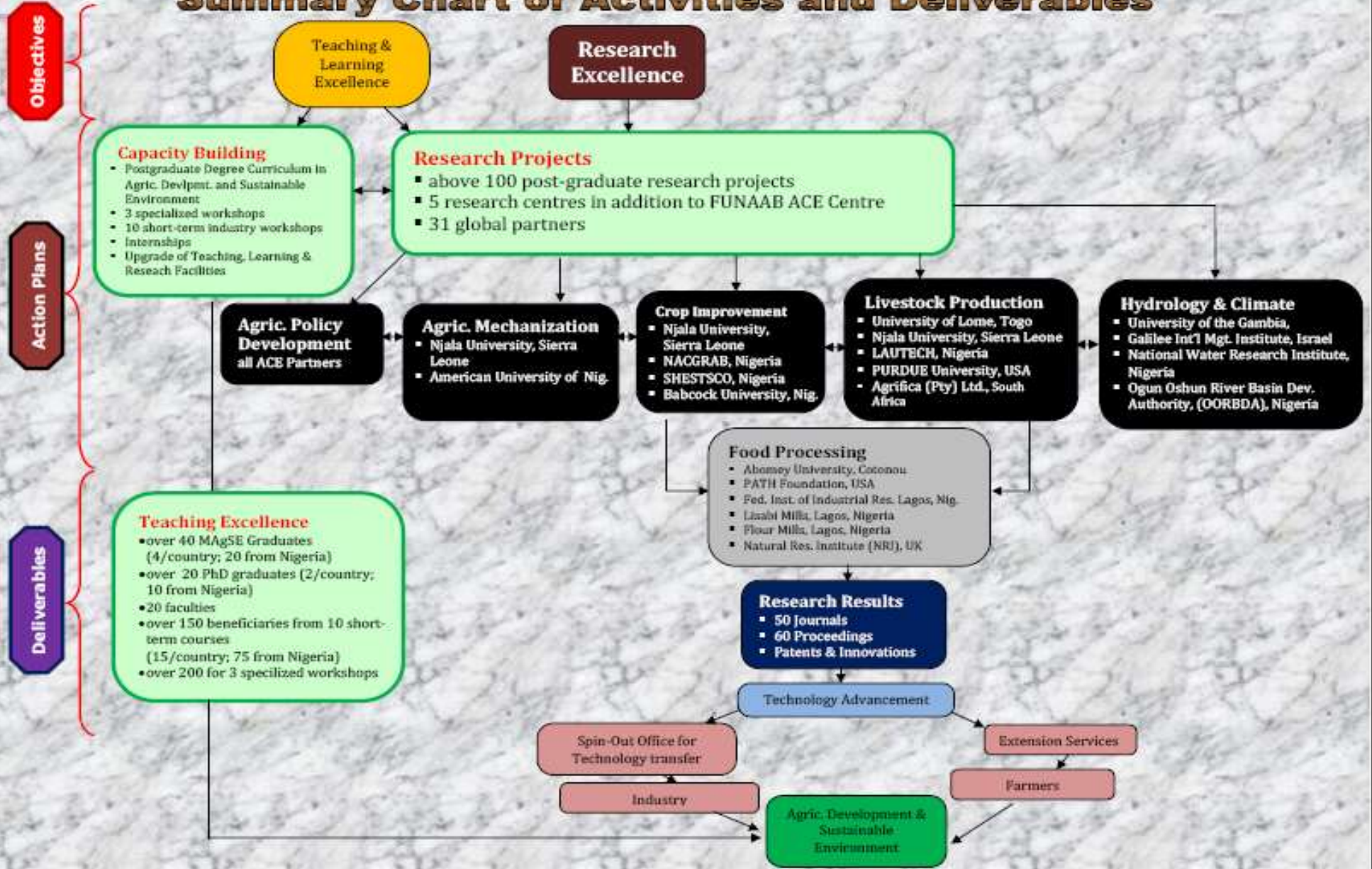
NAME OF THE CENTRE:

Centre of Agricultural Development and Sustainable Environment
(CADESE)

DURATION:

3 years

Summary Chart of Activities and Deliverables



Focus of the CADESE

- ✓ Regional integration and Networking
- ✓ New Research Area linking Agriculture & Environment (ADSE)
- ✓ Postgraduate Students Training (Focus on Employability; Quality; International Exposure)
- ✓ Multidisciplinary approach to problem Solving
- ✓ Multi-site Cutting Edge Research (Anchored in Departments/Institutions/Farms/Laboratories)
- ✓ Internships
- ✓ Field Studies and Case-based learning
- ✓ Faculty Development
- ✓ Library Upgrade

Justification for the Centre

The development challenges faced by this institution:

- Poor funding for upgrade of teaching and research facilities to international standards.
- Low impact of Agriculture graduates in the Agricultural sector, and food production chain in Nigeria and in the West Africa sub-region.
- Insufficient funds for multidisciplinary, multi-site researches that are demand-driven.
- Difficulties in attracting foreign students to Nigerian Universities.
- Low adoption of research findings from Nigerian Universities.

Objectives of the Centre



To:

- ✓ Initiate cutting-edge research in Agricultural Development & Sustainable Environment.
- ✓ Introduce short term industry-based courses for skill acquisition & knowledge transfer.
- ✓ Use multi-site/multidisciplinary approach for regional integration/knowledge sharing.
- ✓ Attract foreign students/faculties towards internationalizing the University.
- ✓ Establish spin-off for robust dissemination/transfer/adoption of research outcomes.

CADESE Training Structure (LT)

LONG TERM

M.Sc

Ph. D

Postdoc

Options

- ✓ Crop Improvement and Seed Enterprise Development
- ✓ Livestock Production and Climate Change
- ✓ Food Processing and Value Addition
- ✓ Hydrology and Climate Change
- ✓ Agricultural Mechanization and Climate Change
- ✓ Agricultural Policies

CADESE Training Structure (ST)

SHORT TERM

Specialized Workshops (6)

*All at the ACE
Averagely 2 per year*

Industry-based Workshops (10)

*5 at the ACE
1 each in other countries
Averagely 3 per year*

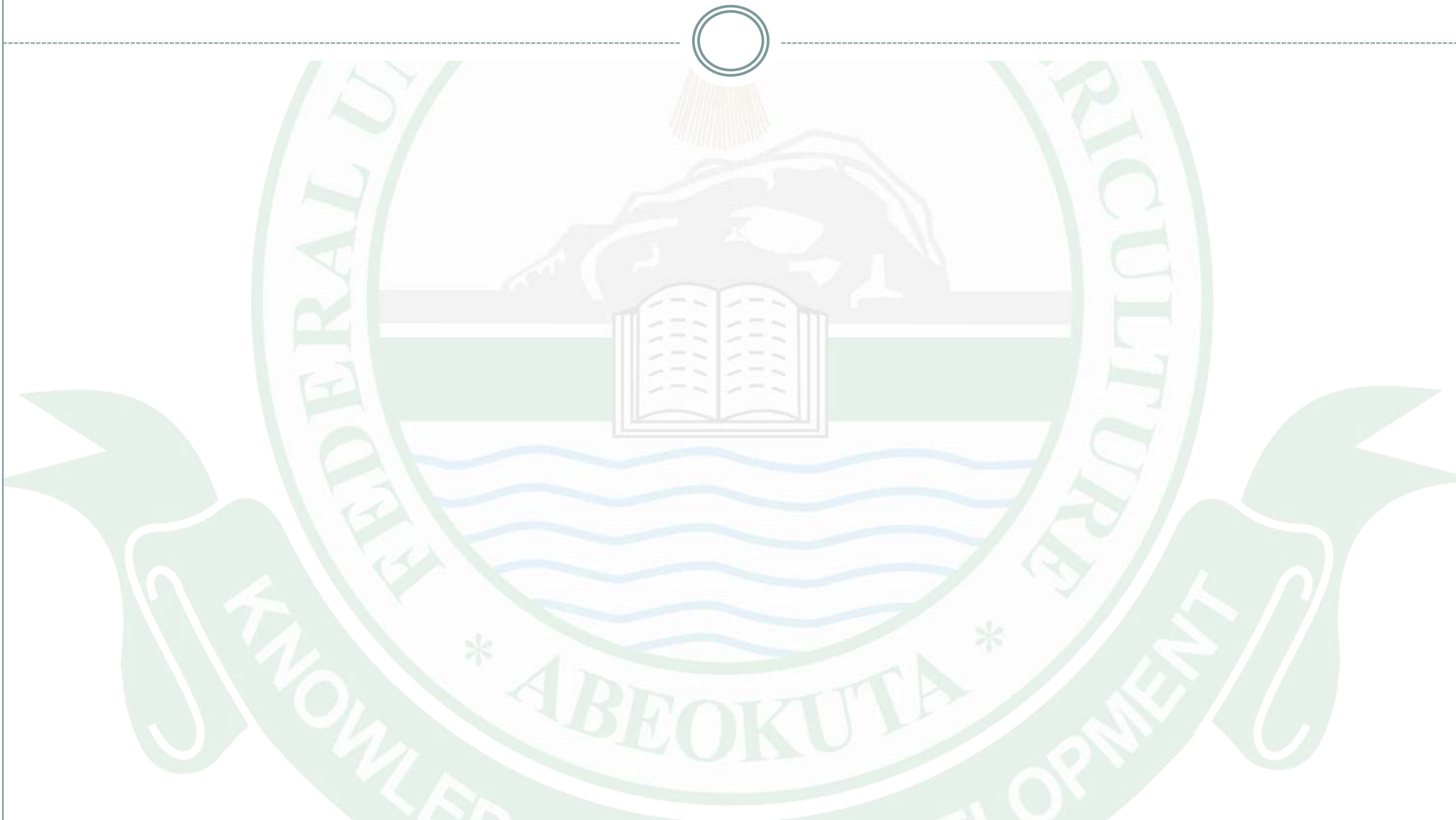
Industry-based Workshops

- ✓ Biotechnology for Crop and Livestock Improvement
- ✓ Technological strategy for climate change Mitigation and Adaptations
- ✓ ICT in food Security for a Sustainable Environment
- ✓ Climate Change and natural Resource Mgt.
- ✓ Project planning, Appraisal and Mgt.
- ✓ Aquaculture and Fishery Mgt.
- ✓ Pragmatic approaches to Feed Formulation
- ✓ Mushroom Production
- ✓ Artificial Insemination
- ✓ Hatchery Mgt.

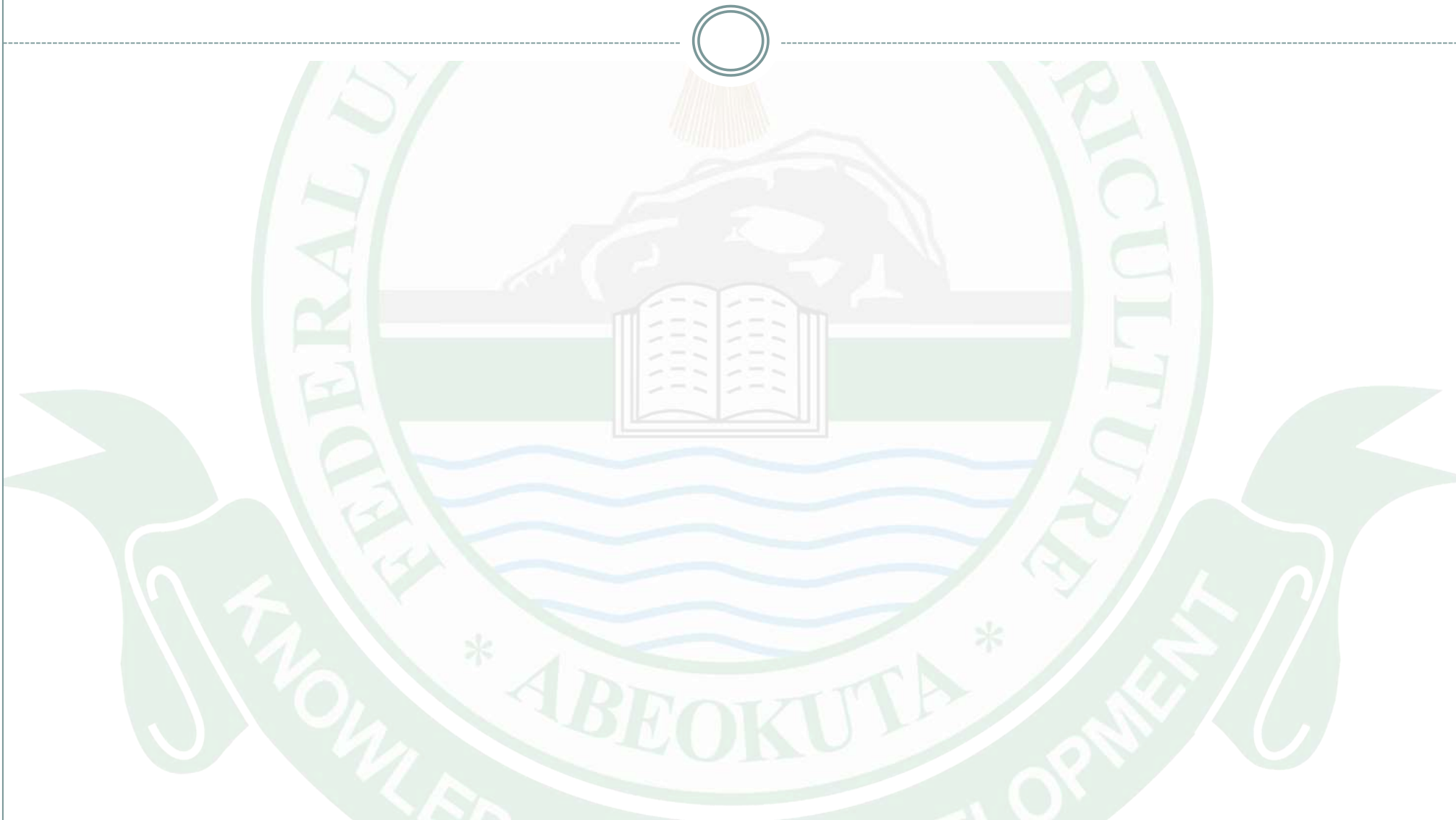
Specialised Workshops

- ✓ English language Course (ELC) – 2 x
- ✓ Grant Winning Proposal Writing (GPW)
- ✓ Scientific Writing and Presentation(SWP)
- ✓ Mentoring and Donor Intelligence (MDI)
- ✓ Dissemination & Feedback (DIF)

Curriculum



Curriculum Contd.



ROLES OF PARTNERS

(National, Industries & Line Ministries)

National

- American University of Nigeria, Yola (*Joint Research Agriculture and ICT*)
- National Centre for Genetic Resources and Biotechnology (NAGRAB), Ibadan (*Research and Internship*)
- Sheda Science and Technology Complex (SHETSCO), Abuja, Nigeria (*Research and Internship*)
- Ladoké Akintola University of Technology (LAUTECH), Ogbomoso, Nigeria (*Teaching, Research*)
- Babcock University, Ilisan (*Teaching and Research*)

Industries

- Obasanjo Holdings, Nigeria (*Research, Internships & Avenue for Employment*)
- Vegefresh Company Limited, Lagos, Nigeria (*Research and Internship*)
- Lisabi Mills, Lagos, Nigeria (*Food Processing*)
- Agrifica (Pty) Ltd/Elpasso Farms, South Africa (*Agribusiness Development*)
- Flour Mills PLC, Lagos, Nigeria (*Crop Improvement & Food Processing*)

Line Ministries

- Federal Institute of Industrial Research, Oshodi, (FIIRO) Nigeria (*Food Processing: Research/Internships*)
- National Water Research Institute, Kaduna, Nigeria (*Hydrology: Research/Joint sourcing of funds*)
- Ogun Oshun River Basin Devt. Authority (OORBDA), Abeokuta, Nigeria (*Hydrology: Research/Internships*)
- Ministry of Agriculture, Sierra Leone (*Research and Extension/Joint sourcing of funds*)
- Ministry of Education, Sierra Leone (*Research and Extension/Joint sourcing of funds*)

Roles of CADESE Partners (Governments & Regional/International)

Governments

- Government of Liberia, Monrovia (*Research and Extension*)
- Government of Sierra Leone, Freetown (*Research and Extension*)
- Government of the Gambia, Banjul (*Research and Extension*)

Regional/International

- University of Abomey-Calavi, Benin Republic.
- University of Lome, Togo (*Teaching, Research and Internship*)
- Njala University, Sierra Leone (*Teaching, Research and Internship*)
- University of the Gambia, Banjul (*Teaching, Research and Internship*)
- University of Liberia, Monrovia (*Teaching, Research and Internships*)
- Galilee International Institute, Israel (*Teaching and Research*)
- Purdue University, Indiana, USA (*Teaching, Research and Faculty exchange*)
- PATH Foundation, USA (*Teaching, Research and Faculty exchange*)
- University of Maryland, USA (*Teaching, Research and Faculty exchange*)
- Natural Resources Institute (NIR), UK (*Teaching and Research*)

Basis for Choice of CADESE Partners



✓ International Partners:	13
✓ National Partners:	5
✓ Industries:	5
✓ line ministries:	3

The partners have been meticulously chosen on the bases of:

- Common research/training objectives
- Outstanding capability in specific areas
- Remoteness of location of institutions
- Benefits to be derived by such
- Anglophone – Francophone integration

Distribution Pattern of Proposed National & International Students

Indicator	Annual Targets (2014)	Annual Targets (2015)	Annual Targets (2016)	Deliverables
No. of New Students in ACE courses (30 % must be regional students):	<u>90 Students</u> (Togo = 10; Liberia = 10; Sierra Leone = 10, Gambia = 10; Benin =10; Nigeria = 40)	<u>70 Students</u> (Togo = 7; Liberia = 7; Sierra Leone = 7, Gambia = 7; Benin =7; Nigeria = 35)	<u>50 Students</u> (Togo = 5; Liberia = 5; Sierra Leone = 5, Gambia = 5; Benin =5; Nigeria = 25)	210 Students
• No. of PhD Students	20 (New Students) 2/country, 10 from Nigeria	20 (Continuing)	20 (Continuing)	20 (graduated)
• No. of Master Students	20 (New Students) 3/country, 5 from Nigeria	40 (20 Cont. + 20 New) 2/country, 10 from Nigeria	20(20 Grad. , 20 Cont.)	40 (graduated)
• New Industry-Based Workshops, 3/year - (min. 40 hours/ wk)	50 (New Students) 5/country, 25 from Nigeria	50 (New Students) 5/country, 25 from Nigeria	50 (New Students) 5/country, 25 from Nigeria	150 (graduated)
• New Specialized Workshops, 2/year	ELC (Stdts. from Togo/Benin), GPW (PG Students + Staff)	ELC (Stdts from Togo/Benin) SWP (PG Students + Staff)	MDI (PG Stdts. + Staff) DIF (PG Students + Staff)	PG Students + Staff (Trained)
• No. of Regional Students	50 (56 %)	35 (50 %)	25 (50 %)	110 (52 %)

POSTDOCS & Students' Internships



Indicator	Annual Targets (2014)	Annual Targets (2015)	Annual Targets (2016)	Deliverables
<ul style="list-style-type: none"> • No of Internships “periods” (Faculty and Students working 1 months outside of ACE). <i>This takes place in partnering private sector organization and/or companies outside the ACE</i> • Recruitment of Post-docs on a 2-year Tenure for Teaching Research and Students Supervision. 	<p>N/A</p> <p>5 New Post-doctoral Research Fellows</p>	<p>20 Faculties with all 20 Masters Students</p> <p>5 Continuing Post-doctoral Research Fellows</p>	<p>20 Faculties with remaining 20 Masters</p> <p>5 Post-doctoral Research Fellows Tenure Completion</p>	<p>40 Masters Students (Benefited from Internships)</p> <p>5 Post-doctoral Fellows (Trained)</p>

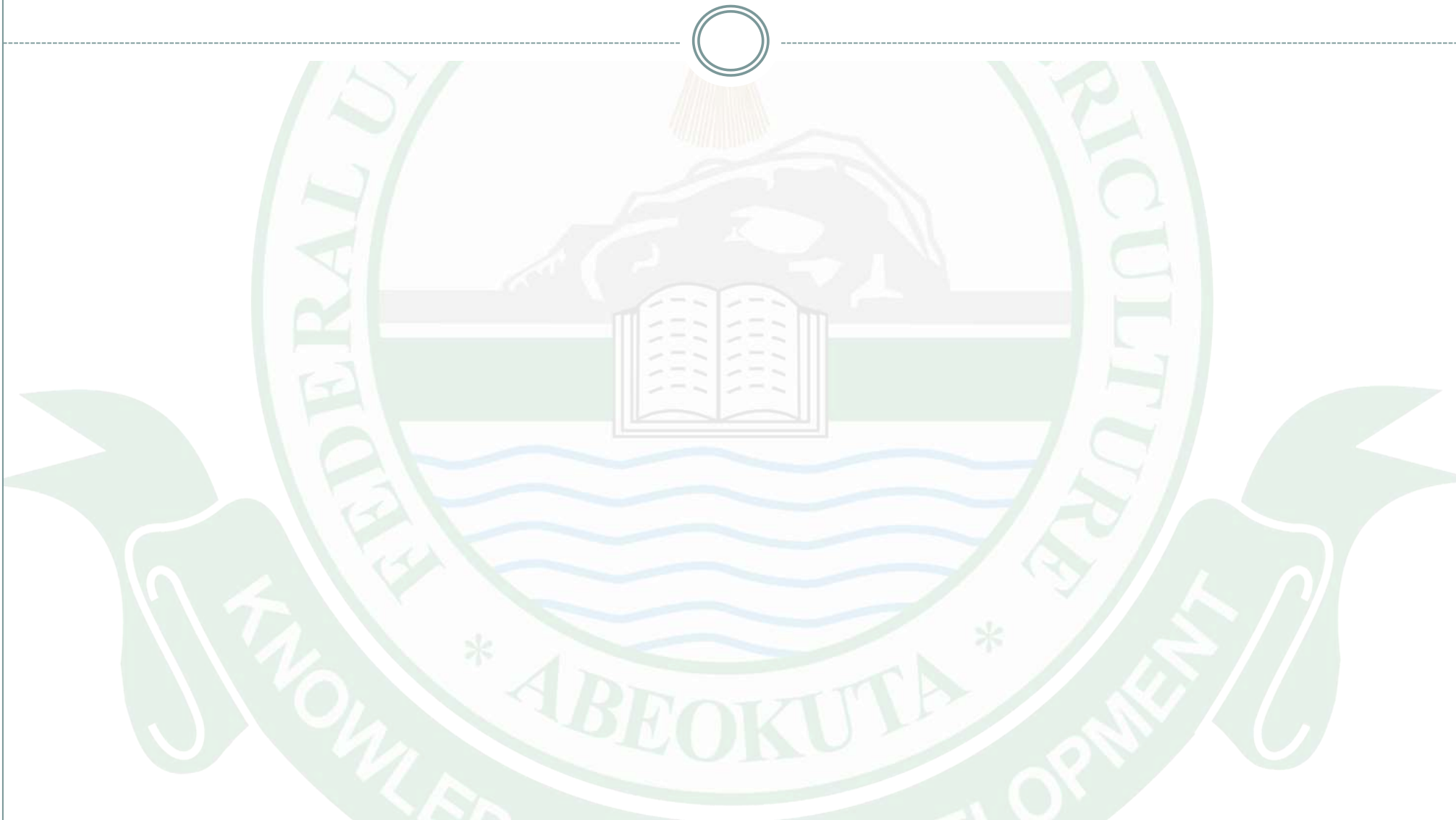
CADESE Research Output And Deliverables

Indicator	Annual Targets (2014)	Annual Targets (2015)	Annual Targets (2016)	Deliverables (2017)
<ul style="list-style-type: none"> Needs Analysis, Research Facilitation Meetings, Endorsement of MoUs/MoEs 	<ul style="list-style-type: none"> Research Needs for industries Research Needs for Rural sector Upgrade of Research Equipment 	<p>Research facilitation meetings to advance research topics to address the gaps identified above, supervision of research students and endorsement of MoUs.</p> <p>Articulation of Memorandum of Engagements (MoE) for assignment of facilities for internships at the different partnering institutions.</p> <p>Faculty Exchange leading to Significantly improved Faculty Mobility within the Region</p>	<p>Innovative, Market-oriented, demand-driven research output.</p>	<ul style="list-style-type: none"> Dissemination of Research outputs, information sharing, feedback and awareness through mounting of specialized workshops. Presentation of research outputs in regional and international scientific conferences.
<ul style="list-style-type: none"> N# of published articles in internationally recognized and peer reviewed journals**** 		<p>5 quality published journal articles in high impact peer reviewed journals.</p> <p>10 quality, peer- reviewed publications from regional and international conference proceedings.</p>	<p>10 quality published journal articles in high impact peer- reviewed journals.</p> <p>20 quality, peer- reviewed publications from regional and international conference proceedings.</p>	<p>15 quality published journal articles in high impact, peer- reviewed journals</p> <p>30 quality, peer- reviewed publications from regional and international conference proceedings</p>

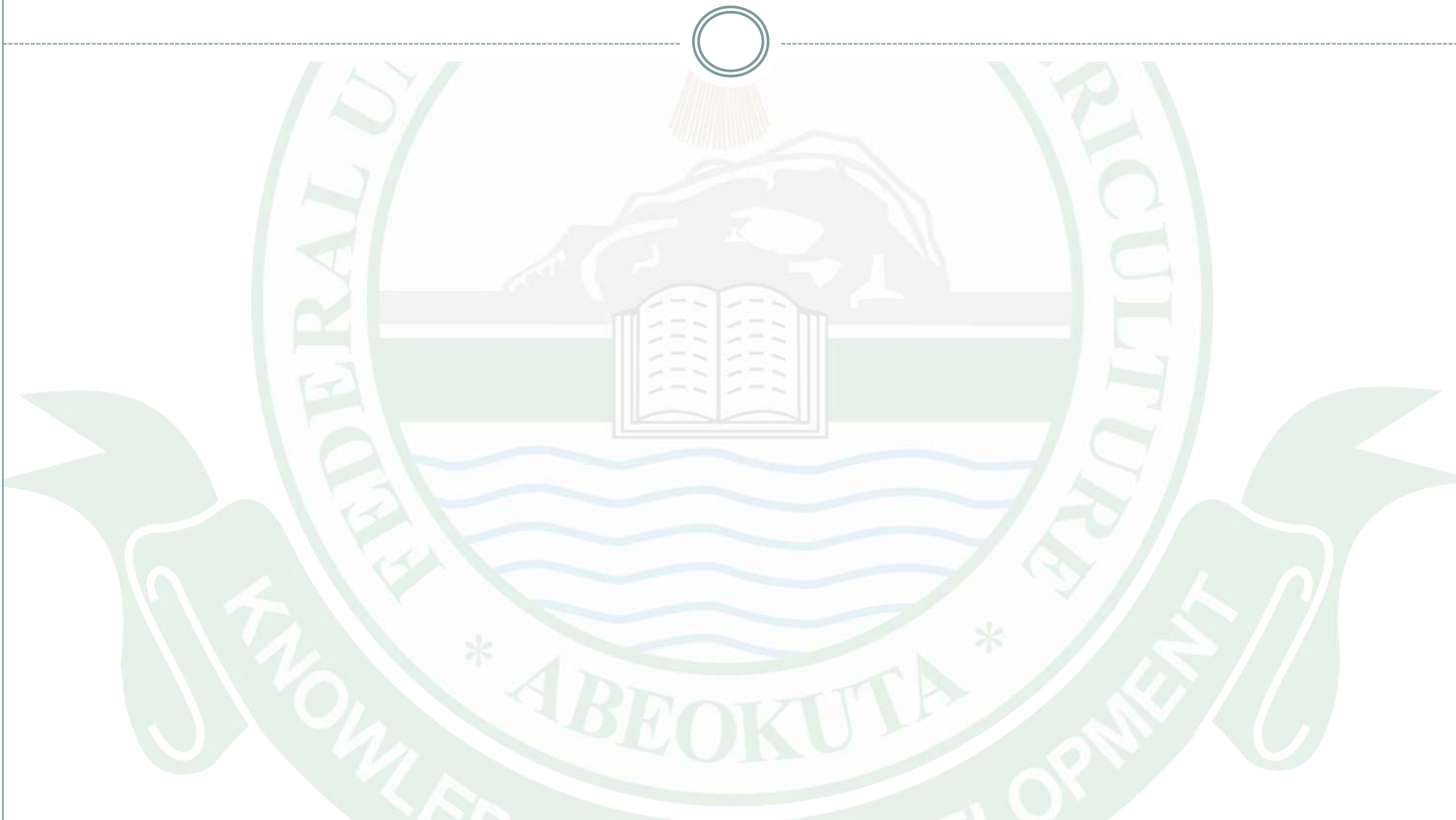
CADESE Values

- ❖ **Strong Management Commitment:**
Council, Senate and University Management supports.
- ❖ **Track Record of Grants Management:**
Excellent structure for managing Grants from EU, AU, WHO, BMGF, FAO, STEPB.
- ❖ **International/National linkages, and Reputation:**
Adjudged variously as the best University in Nigeria, Best in Research Fair, Best in Students Industrial Scheme; Best University of Agriculture in Africa in the past 2 consecutive years etc.
- ❖ **Equity Dimensions:**
Resources Mapping, Skills Gap Mapping, International Best Practices in Distribution Patterns of Teaching and Learning Resources, 52 % of the 210 Student Beneficiaries from outside Nigeria.
- ❖ **Procurements from most responsive bids & using World Bank standards:**
Regional Offices shall also have procurement Officers.
- ❖ **Sustainability Plan:**
2014 – 2017: 50 extra students, >2017: 100 students per session, Joint Fund Sourcing, Patenting etc.
- ❖ **Building on excellent foundation:**
Regular Academic Calendar, Peaceful, Safe and Serene Campus Environment etc.

Organogram of the Management Board



Organogram of the Scientific Board



Implementation Plan of each CADESE Action plan

S/N	Description of Activities	Year 1				Year 2				Year 3			
		1st Qtr	2nd Qtr.	3rd Qtr.	4th Qtr.	1st Qtr	2nd Qtr.	3rd Qtr.	4th Qtr.	1st Qtr	2nd Qtr.	3rd Qtr.	4th Qtr.
1.	Meetings of National and Regional/International Coordinators (at the ACE)												
2.	Studentship Advertisement (M.Sc. & PhD) (Region-wide)												
3.	Advertisement for Short-courses (Region-wide)												
4.	Screening/Admission (at the ACE)												
5.	Screening/Admission (Short-courses) (at the ACE)												
6.	Procurements (at the ACE & Partnering Institutions)												
7.	Language Course(at the ACE)												
8.	M.Sc Programme (1st Set) (at the ACE)												
9.	M.Sc Programme (2nd Set) (at the ACE)												
10.	PhD Programme (at the ACE)												
11.	Research Projects (Region-wide)												
12.	Specialized Workshops (at the ACE)												
13.	Short-term Courses (at the ACE) (Togo=1; Sierra-Leone =1; Benin=1; Gambia=1; Liberia=1; ACE= 5)												
14.	Internships (Region-wide)												
15.	Dissemination Workshops (at the ACE)												
16.	Project Report												



Thank You

